

MAXI-BLEND®

SUPER CONCENTRATE

MULTI-SURFACE

BATHROOM CLEANER

Powerful and fast acting... Aciduous detergent based cleaner instantly foams away heavy grease, soil, body oils, and mineral deposits from fiberglass, tile, chrome, and plastics.

Outstanding grout cleaner... specially effective on greasy, dirty ceramic floors found in kitchens, shower rooms, and supermarket venues. Green, pH <1, 1:88 to 1:128 dilutions (see tip selection guide on reverse side).

Areas of Utilization

- Shower Walls/Floors
- Locker Rooms
- Beach Houses
- Quarry Tile Floors
- Kitchen Floors
- Air Conditioner Coils

Manufactured by:
CANBERRA CORPORATION
3610 Holland-Sylvania Rd.
Toledo, Ohio 43615

4030



Applications *Concentrate

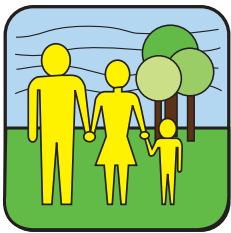
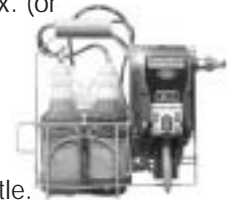
- Recommended for mopping, foaming, spraying, or brushing the surfaces listed below.

General Directions for Use:

1. For light to normal cleaning dilute 1:88*; Figure 1.
 2. For economy purposes (1:128)*, place the proper proportioning tip provided with your super concentrate proportioning unit into the appropriate venturi (fig. 1) as per instructions included with your proportioner.
- * See Tip Selection Guide below.

Directions for Use with Super Concentrate Proportioning Stations:

1. Remove shipping cap from super concentrate bottle.
2. Place super concentrate bottle on super concentrate toolbox. (or preferred storage device)
3. Obtain correct super concentrate pick-up tube by matching pick-up tube label (fig. 2) to the name and color on the super concentrate label. (fig. 3)
4. Place pick-up tube cap to the correct super concentrate bottle.
5. Begin proportioning.



MAXI-BLEND®

SUPER CONCENTRATE

MULTI-SURFACE

BATHROOM CLEANER

Powerful and fast acting... Aciduous detergent based cleaner instantly foams away heavy grease, soil, body oils, and mineral deposits from fiberglass, tile, chrome, and plastics.

Outstanding grout cleaner... specially effective on greasy, dirty ceramic floors found in kitchens, shower rooms, and supermarket venues. Green, pH <1, 1:88 to 1:128 dilutions (see tip selection guide on reverse side).

Areas of Utilization

- Shower Walls/Floors
- Locker Rooms
- Beach Houses
- Quarry Tile Floors
- Kitchen Floors
- Air Conditioner Coils

Manufactured by:
CANBERRA CORPORATION
3610 Holland-Sylvania Rd.
Toledo, Ohio 43615

4030

Applications *Concentrate

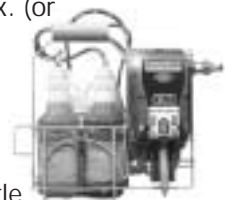
- Recommended for mopping, foaming, spraying, or brushing the surfaces listed below.

General Directions for Use:

1. For light to normal cleaning dilute 1:88*; Figure 1.
 2. For economy purposes (1:128)*, place the proper proportioning tip provided with your super concentrate proportioning unit into the appropriate venturi (fig. 1) as per instructions included with your proportioner.
- * See Tip Selection Guide below.

Directions for Use with Super Concentrate Proportioning Stations:

1. Remove shipping cap from super concentrate bottle.
2. Place super concentrate bottle on super concentrate toolbox. (or preferred storage device)
3. Obtain correct super concentrate pick-up tube by matching pick-up tube label (fig. 2) to the name and color on the super concentrate label. (fig. 3)
4. Place pick-up tube cap to the correct super concentrate bottle.
5. Begin proportioning.



MULTI LIMPIADOR DE SUPER-ERFICIE DE CUARTO DE BAÑO



Instrucciones generales para el uso.

1. Para la limpieza ligera o normal, diluya a 1:88*.
2. Para propósitos económicos (1:128)*, coloque la punta proporcional apropiada provista dentro del venturi apropiado según las instrucciones incluidas con la unidad para proporcionar.

* Mirar la guía de selección de punta(consejo) debajo.

Instrucciones para estaciones de proporcionar el Superconcentrado.

1. Retire la tapa de envío de la botella Superconcentrado.
2. Coloque la botella Superconcentrado en un estante o en la caja de equipo de Superconcentrado. (o dispositivo de almacenaje referido)
3. Encuentre el tubo recogedor correcto de Superconcentrado por emparajar la etiqueta del tubo recogedor y el nombre y color de la etiqueta de Superconcentrado.
4. Coloque la tapa del tubo recogedor en la botella de Superconcentrado correspondiente.
5. Comience a proporcionar.

*Maxi-Blend 4000 Tip Selection Guide

Dilution Ratio	Low Flow Units (1 gmp)	High Flow Units (4 gmp)
1:88	Light Green	None
1:128	Orange	Peach

Manufactured by:
CANBERRA CORPORATION
 3610 Holland-Sylvania Rd.
 Toledo, Ohio 43615

MULTI LIMPIADOR DE SUPER-ERFICIE DE CUARTO DE BAÑO



Instrucciones generales para el uso.

1. Para la limpieza ligera o normal, diluya a 1:88*.
2. Para propósitos económicos (1:128)*, coloque la punta proporcional apropiada provista dentro del venturi apropiado según las instrucciones incluidas con la unidad para proporcionar.

* Mirar la guía de selección de punta(consejo) debajo.

Instrucciones para estaciones de proporcionar el Superconcentrado.

1. Retire la tapa de envío de la botella Superconcentrado.
2. Coloque la botella Superconcentrado en un estante o en la caja de equipo de Superconcentrado. (o dispositivo de almacenaje referido)
3. Encuentre el tubo recogedor correcto de Superconcentrado por emparajar la etiqueta del tubo recogedor y el nombre y color de la etiqueta de Superconcentrado.
4. Coloque la tapa del tubo recogedor en la botella de Superconcentrado correspondiente.
5. Comience a proporcionar.

*Maxi-Blend 4000 Tip Selection Guide

Dilution Ratio	Low Flow Units (1 gmp)	High Flow Units (4 gmp)
1:88	Light Green	None
1:128	Orange	Peach

Manufactured by:
CANBERRA CORPORATION
 3610 Holland-Sylvania Rd.
 Toledo, Ohio 43615

SECTION I - PRODUCT IDENTIFICATION

See reverse side for product identification.

SECTION II - HAZARDOUS INGREDIENTS/IDENTITY INFORMATION

Hazardous components	CAS#s	OSHA PEL	ACGIH TLV	Other Limits	%(Optional)
*2-Butoxyethanol	111-76-2	25 ppm	25 ppm	N/A	1-5
Nonionic Surfactant	9016-45-9	N/A	N/A	N/A	1-5
Organic Salt	506-89-8	N/A	N/A	N/A	10-15

*This chemical is subject to the reporting requirements for Section 313 of Title III of the Superfund Amendments and Reauthorization Act of 1986 and 40 CFR Part 372.

SECTION III - PHYSICAL AND CHEMICAL CHARACTERISTICS

Boiling Point	~212° F	Specific Gravity (H ₂ O=1)	1.040
Vapor Pressure (mm Hg.)	N/E	Percent Volatile By Weight (%)	>85%
pH (conc.)	<1	Evaporation Rate (H ₂ O=1)	~ 1
Solubility in Water	Complete		
Appearance and Odor	Green Liquid-Fresh Fragrance		

SECTION IV - FIRE AND EXPLOSION HAZARD DATA

Flash Point (Method Used): Not Established Flammable Limits: LEL: N/E UEL: N/E
 Extinguishing Media: Water, CO₂, Foam or media suitable for surrounding fire
 Special Fire Fighting Procedures: Standard fire fighting procedures may be followed, including full protective gear, NIOSH approved self-contained breathing apparatus.
 Unusual Fire and Explosion Hazards: None Known

SECTION V - PHYSICAL HAZARDS

Stability Unstable Conditions to Avoid: None Known
 Stable
 Incompatibility (Materials to Avoid): Do not mix with chlorine bleach or other chemicals.
 Hazardous Decomposition Products or By-products: Thermal decomposition or burning may produce toxic vapors or gases. Chlorine gas, hydrogen gas.
 Hazardous May Occur Conditions to Avoid: None Known
 Polymerization Will Not Occur

N/A (Not applicable / Not available)

6/01

N/E (Not Established)

SECTION VI - HEALTH HAZARDS

Route(s) of Entry: Inhalation? X Skin? X Ingestion? X
 Health Hazards (1. Acute and 2. Chronic) 1. Acute: Harmful if swallowed. Eye and skin irritant. May cause permanent damage. Can irritate mucous membranes and respiratory tract.
 2. Chronic: None Known

Chemical Listed as Carcinogen or Potential Carcinogen:

National Toxicology Program: Yes No
 I.A.R.C. Monographs: Yes No
 OSHA: Yes No

Signs and Symptoms of Exposure: Irritation or burning sensation.

Medical Conditions Generally Aggravated by Exposure: May aggravate skin disorders or respiratory ailments. Emergency and First Aid Procedures: Eye Contact: Flush immediately with water for 15 minutes. Get medical attention. Skin Contact: Flush with water for 15 minutes. Remove and wash contaminated clothing. Ingestion: Rinse mouth with water. Then drink 1-2 glasses of water. Never give anything by mouth to an unconscious person. Get immediate medical attention. Inhalation: Move to fresh air. Get medical attention.

SECTION VII - PRECAUTIONS FOR SAFE HANDLING AND USE

Steps To Be Taken In Case Material Is Released Or Spilled: Wear appropriate protective equipment. If possible, contain spill and collect in an approved container. Rinse affected area thoroughly with water. Keep product out of storm sewers or waterways. Hold for disposal.
 Waste Disposal Method: Dispose of in accordance with local, state and federal regulations. If possible, triple rinse container and recycle.
 Precautions To Be Taken In Handling And Storing: Avoid contact with skin or eyes. Avoid breathing vapor, spray or mist. Store in original container, in cool dry place with adequate ventilation. Keep container tightly closed when not in use.
 Other Precautions: Use only according to label directions. If unsure about safe use, contact your supervisor immediately.

SECTION VIII - CONTROL MEASURES

Respiratory Protection (Specify Type): Not expected to be necessary under normal conditions of use. Where exposure cannot be adequately controlled by general or local ventilation, use appropriate respiratory protection to prevent over exposure. An approved dust/mist respirator would be recommended. Ventilation: Local Exhaust: As necessary
 Mechanical (General): Adequate Special: N/A Other: N/A Protection Gloves: Water Impervious (Latex, Neoprene) Eye Protection: Chemical Resistant Goggles or Face Shield
 Other Protective Clothing Or Equipment: Not Required. Eye wash recommended.
 Work/Hygiene Practices: Follow OSHA mandated procedures. Never eat or smoke while working with chemicals. Good housekeeping practices apply. Wash thoroughly after handling.

SECTION I - PRODUCT IDENTIFICATION

See reverse side for product identification.

SECTION II - HAZARDOUS INGREDIENTS/IDENTITY INFORMATION

Hazardous components	CAS#s	OSHA PEL	ACGIH TLV	Other Limits	%(Optional)
*2-Butoxyethanol	111-76-2	25 ppm	25 ppm	N/A	1-5
Nonionic Surfactant	9016-45-9	N/A	N/A	N/A	1-5
Organic Salt	506-89-8	N/A	N/A	N/A	10-15

*This chemical is subject to the reporting requirements for Section 313 of Title III of the Superfund Amendments and Reauthorization Act of 1986 and 40 CFR Part 372.

SECTION III - PHYSICAL AND CHEMICAL CHARACTERISTICS

Boiling Point	~212° F	Specific Gravity (H ₂ O=1)	1.040
Vapor Pressure (mm Hg.)	N/E	Percent Volatile By Weight (%)	>85%
pH (conc.)	<1	Evaporation Rate (H ₂ O=1)	~ 1
Solubility in Water	Complete		
Appearance and Odor	Green Liquid-Fresh Fragrance		

SECTION IV - FIRE AND EXPLOSION HAZARD DATA

Flash Point (Method Used): Not Established Flammable Limits: LEL: N/E UEL: N/E
 Extinguishing Media: Water, CO₂, Foam or media suitable for surrounding fire
 Special Fire Fighting Procedures: Standard fire fighting procedures may be followed, including full protective gear, NIOSH approved self-contained breathing apparatus.
 Unusual Fire and Explosion Hazards: None Known

SECTION V - PHYSICAL HAZARDS

Stability Unstable Conditions to Avoid: None Known
 Stable
 Incompatibility (Materials to Avoid): Do not mix with chlorine bleach or other chemicals.
 Hazardous Decomposition Products or By-products: Thermal decomposition or burning may produce toxic vapors or gases. Chlorine gas, hydrogen gas.
 Hazardous May Occur Conditions to Avoid: None Known
 Polymerization Will Not Occur

N/A (Not applicable / Not available)

6/01

N/E (Not Established)

SECTION VI - HEALTH HAZARDS

Route(s) of Entry: Inhalation? X Skin? X Ingestion? X
 Health Hazards (1. Acute and 2. Chronic) 1. Acute: Harmful if swallowed. Eye and skin irritant. May cause permanent damage. Can irritate mucous membranes and respiratory tract.
 2. Chronic: None Known

Chemical Listed as Carcinogen or Potential Carcinogen:

National Toxicology Program: Yes No
 I.A.R.C. Monographs: Yes No
 OSHA: Yes No

Signs and Symptoms of Exposure: Irritation or burning sensation.

Medical Conditions Generally Aggravated by Exposure: May aggravate skin disorders or respiratory ailments. Emergency and First Aid Procedures: Eye Contact: Flush immediately with water for 15 minutes. Get medical attention. Skin Contact: Flush with water for 15 minutes. Remove and wash contaminated clothing. Ingestion: Rinse mouth with water. Then drink 1-2 glasses of water. Never give anything by mouth to an unconscious person. Get immediate medical attention. Inhalation: Move to fresh air. Get medical attention.

SECTION VII - PRECAUTIONS FOR SAFE HANDLING AND USE

Steps To Be Taken In Case Material Is Released Or Spilled: Wear appropriate protective equipment. If possible, contain spill and collect in an approved container. Rinse affected area thoroughly with water. Keep product out of storm sewers or waterways. Hold for disposal.
 Waste Disposal Method: Dispose of in accordance with local, state and federal regulations. If possible, triple rinse container and recycle.
 Precautions To Be Taken In Handling And Storing: Avoid contact with skin or eyes. Avoid breathing vapor, spray or mist. Store in original container, in cool dry place with adequate ventilation. Keep container tightly closed when not in use.
 Other Precautions: Use only according to label directions. If unsure about safe use, contact your supervisor immediately.

SECTION VIII - CONTROL MEASURES

Respiratory Protection (Specify Type): Not expected to be necessary under normal conditions of use. Where exposure cannot be adequately controlled by general or local ventilation, use appropriate respiratory protection to prevent over exposure. An approved dust/mist respirator would be recommended. Ventilation: Local Exhaust: As necessary
 Mechanical (General): Adequate Special: N/A Other: N/A Protection Gloves: Water Impervious (Latex, Neoprene) Eye Protection: Chemical Resistant Goggles or Face Shield
 Other Protective Clothing Or Equipment: Not Required. Eye wash recommended.
 Work/Hygiene Practices: Follow OSHA mandated procedures. Never eat or smoke while working with chemicals. Good housekeeping practices apply. Wash thoroughly after handling.